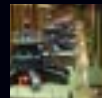
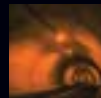


# PENTAX



## CCTV Closed Circuit Television Lenses Specifications



Monofocal Lens

Machine Vision Lens

Zoom Lens

Vari-Focal Lens

Pinhole Lens

CCTV Lens Accessory

MODEL	Focal length	Iris range	Mount	Horizontal Angle of View				Filter size	Dimensions (D×L) (W×H×L) mm	Weight (g)	Remarks
				1/4 format	1/3 format	1/2 format	2/3 format				
<b>● Monofocal Manual Iris Lens</b>											
<b>1/3 format</b>											
TS212A (C70214)	2.8	1.2-C	CS	71.54	94.29	—	—	—	36.8×36.3	44	
TS412A (C70409)	4	1.2-C	CS	49.18	63.89	—	—	—	36.8×33.8	39	
TS812A (C70807)	8	1.2-C	CS	25.05	33.33	—	—	—	36.8×33.8	34	
<b>1/2 format</b>											
HS316A (C60305)	3.7	1.6-C	CS	53.54	71.02	93.66	—	30.5 P=0.5	32×35.7	34	
HS614B (C60622)	6	1.4-C	CS	33.86	44.55	57.82	—	30.5 P=0.5	32×35.7	32	
HS1214D (C61217)	12	1.4-C	CS	16.55	22.06	29.41	—	30.5 P=0.5	32×35.7	26	
H416 (C60402)	4.2	1.6-C	C	47.87	64.27	86.77	—	—	42×43.5	120	Lock Screw
H612A (C60607)	6	1.2-C	C	32.97	43.55	56.93	—	40.5 P=0.5	42×46	125	Lock Screw
H1212B (C61215)	12	1.2-22	C	16.93	22.60	30.18	—	27.0 P=0.5	30×35.5	67	Lock Screw
<b>2/3,1 format</b>											
C418DX (C30405)	4.8	1.8-C	C	41.68	55.11	72.37	96.36	—	40.5×35.5	105	Lock Screw
B618DX (C20616)	6.5	1.8-C	C	29.98	39.78	52.58	70.99	—	48×42	120	Lock Screw
C814 (C30808)	8	1.4-C	C	25.15	33.31	43.88	58.67	40.5 P=0.5	42×58	160	Lock Screw
C815B (C30811)	8.5	1.5-C	C	24.02	31.87	42.09	56.49	40.5 P=0.5	42×40	120	Lock Screw
B1214D-2 (C21211)	12.5	1.4-C	C	16.21	21.53	28.51	38.65	40.5 P=0.5	42×50	135	Lock Screw
B1218A (C21228)	12.5	1.8-C	C	16.53	21.97	29.12	39.56	40.5 P=0.5	42×40	95	Lock Screw
C1614A (C31630)	16	1.4-22	C	12.70	16.91	22.48	30.72	27.0 P=0.5	30×33	58	Lock Screw
B2514D (C22525)	25	1.4-22	C	8.23	10.97	14.62	20.10	27.0 P=0.5	30×37.3	76	Lock Screw
B2518 (C22516)	25	1.8-C	C	8.23	10.95	14.55	19.87	40.5 P=0.5	42×40	87	Lock Screw
B5014A (C25011)	50	1.4-C	C	4.13	5.50	7.32	10.04	46.0 P=0.75	48×48	180	Lock Screw
B5018A-3 (C25010)	50	1.8-C	C	4.13	5.50	7.32	10.04	40.5 P=0.5	42×52.5	130	Lock Screw
B7514C (C27509)	75	1.4-C	C	2.75	3.67	4.90	6.75	58.0 P=0.75	62×79	450	Lock Screw
<b>● Machine Vision Mega-Pixel Lens</b>											
<b>1/2 format</b>											
H1214-M (C61232)	12	1.4-16	C	16.49	21.88	28.91	—	27.0 P=0.5	29.5×28.5	55	Lock Screw
<b>2/3 format</b>											
C1614-M (C31634)	16	1.4-16	C	12.86	17.11	22.72	30.97	27.0 P=0.5	29.5×33.2	63	Lock Screw
C2514-M (C32500)	25	1.4-16	C	8.24	10.97	14.60	20.00	27.0 P=0.5	29.5×32	55	Lock Screw
C3516-M (C33500)	35	1.6-16	C	6.07	8.09	10.76	14.76	27.0 P=0.5	29.5×35.4	64	Lock Screw
C5028-M (C35001)	50	2.8-22	C	4.12	5.50	7.32	10.05	27.0 P=0.5	29.5×34	55	Lock Screw
C7528-M (C37500)	75	2.8-32	C	2.83	3.77	5.03	6.90	30.5 P=0.5	34×59.6	125	Lock Screw
<b>● Line-Scan Lens</b>											
YK3528 (C52915K)	35	2.8-22	K	64.4 (45mm Image Format)				62 P=0.75	72×57.8	440	Not for photographic cameras
YK5028 (C52893K)	50	2.8-22	K	47.6 (45mm Image Format)				62 P=0.75	72×57.8	440	
YF3528 (C52915F)	35	2.8-22	F	64.4 (45mm Image Format)				62 P=0.75	72×56.8	440	
YF5028 (C52893F)	50	2.8-22	F	47.6 (45mm Image Format)				62 P=0.75	72×56.8	440	
<b>● UV Lens (Ultraviolet Ray)</b>											
<b>1/2 format</b>											
H2520-UV (C62500)	25	2.0-16	C	8.24	10.98	14.62	—	27 P=0.5	29.5×46	78	Mega-Pixel, Lock Screw
<b>1 format</b>											
B2528-UV (C91699)	25	2.8-16	C	8.30	11.10	14.80	20.40	25 P=0.5	30×25.4	33	Lock Screw
B7838-UV (C91698)	78	3.8-16	C	2.70	3.50	4.70	6.50	49 P=0.75	62.5×109.3	446	
<b>● Monofocal Auto-Iris Lens</b>											
<b>1/3 format</b>											
TS212E (C70210)	2.8	1.2-200	CS	71.54	94.28	—	—	—	36.8×43.5×36.3	54	Video & DC Iris
TS412E (C70406)	4	1.2-200	CS	49.18	63.89	—	—	—	36.8×43.5×33.8	49	Video & DC Iris
TS812E (C70804)	8	1.2-200	CS	25.05	33.33	—	—	—	36.8×43.5×33.8	44	Video & DC Iris
<b>1/2 format</b>											
HS316E (C60309)	3.7	1.6-300	CS	53.50	70.96	93.58	—	34 P=0.5	42.8×47.1×36.5	57	Video & DC Iris
HS614E (C60630)	6	1.4-300	CS	33.83	44.52	57.79	—	34 P=0.5	42.8×47.1×36.5	60	Video & DC Iris
HS1214E (C61227)	12	1.4-300	CS	16.52	22.03	29.38	—	34 P=0.5	42.8×47.1×36.5	46	Video & DC Iris
H416E (C60405)	4.2	1.6-360	C	47.90	64.30	86.78	—	—	46.5×50.5×45	135	Video & DC Iris
H612E (C60625)	6	1.2-360	C	32.96	43.54	56.91	—	43 P=0.75	46.5×50.5×51.1	140	Video & DC Iris
H1212E (C61220)	12	1.2-360	C	16.94	22.60	30.19	—	43 P=0.75	46.5×50.5×51.1	140	Video & DC Iris
<b>2/3,1 format</b>											
C418E (C30407)	4.8	1.8-360	C	41.27	54.57	71.65	95.4	—	46.5×50.5×37.5	120	Video & DC Iris
C814E (C30821)	8	1.4-360	C	25.10	33.22	43.67	58.25	43 P=0.75	46.5×50.5×51.1	140	Video & DC Iris
B1214E (C21223)	12.5	1.4-360	C	16.22	21.55	28.54	38.69	43 P=0.75	46.5×50.5×47.5	140	Video & DC Iris
C1614E (C31632)	16	1.4-360	C	12.72	16.92	22.50	30.76	43 P=0.75	46.5×50.5×46.7	110	Video & DC Iris
B2514E (C22527)	25	1.4-360	C	8.23	10.97	14.62	20.09	43 P=0.75	46.5×50.5×51.8	140	Video & DC Iris
B5018E (C25018)	50	1.8-360	C	4.13	5.50	7.32	10.04	49 P=0.75	62×51	230	Video & DC Iris
B7518AE (C27515)	75	1.8-360	C	2.74	3.65	4.87	6.69	49 P=0.75	62×70.5	300	Video & DC Iris
<b>● Manual Override (Remote-Control Iris) Lens</b>											
<b>1/2 format</b>											
H416ER (C60404)	4.2	1.6-360	C	47.90	64.30	86.78	—	—	46.5×50.5×45	135	Video Iris
H612ER (C60624)	6	1.2-360	C	32.96	43.54	56.91	—	43 P=0.75	46.5×50.5×51.1	140	Video Iris
H1212ER (C61219)	12	1.2-360	C	16.94	22.60	30.19	—	43 P=0.75	46.5×50.5×51.1	140	Video Iris
<b>2/3,1 format</b>											
C418ER (C30406)	4.8	1.8-360	C	41.27	54.57	71.65	95.40	—	46.5×50.5×37.5	120	Video Iris
C814ER (C30820)	8	1.4-360	C	25.10	33.22	43.67	58.25	43 P=0.75	46.5×50.5×51.1	140	Video Iris
B1214ER (C21221)	12.5	1.4-360	C	16.22	21.55	28.54	38.69	43 P=0.75	46.5×50.5×47.5	140	Video Iris
C1614ER (C31631)	16	1.4-360	C	12.70	16.92	22.50	30.76	43 P=0.75	46.5×50.5×46.7	110	Video Iris
B2514ER (C22526)	25	1.4-360	C	8.23	10.97	14.62	20.09	43 P=0.75	46.5×50.5×51.8	140	Video Iris
B5018ER (C25017)	50	1.8-360	C	4.13	5.50	7.32	10.04	49 P=0.75	62×51	230	Video Iris
<b>● High Sensitivity Auto-Iris (F1000/2000) Lens</b>											
<b>1 format</b>											
B1214E-2000 (C21224)	12.5	1.4-2000	C	16.22	21.54	28.54	38.69	43 P=0.75	46.5×50.5×47.5	140	Video Iris
B2514E-2000 (C22528)	25	1.4-2000	C	8.23	10.97	14.62	20.09	43 P=0.75	46.5×50.5×51.8	140	Video Iris
B5018E-1000 (C25019)	50	1.8-1000	C	4.13	5.50	7.32	10.04	49 P=0.75	62×51	230	Video Iris
B7518AE-1000 (C27516)	75	1.8-1000	C	2.74	3.65	4.87	6.69	49 P=0.75	62×70.5	300	Video Iris

MODEL	Focal length	Iris range	Mount	Horizontal Angle of View				Filter size	Dimensions (D×L) (W×H×L) mm	Weight (g)	Remarks
				1/4 format	1/3 format	1/2 format	2/3 format				

## Vari-Focal Lens

### 1/3 format

TS2V114E (C70100)	1.6-3.4	1.4-64	CS	180.00-64.89	180-89.55	—	—	—	38.3×44.7×56.7	140	Fish-Eye, DC Iris
TS2V214AE (C70220)	2.8-6	1.4-300	CS	72.26-35.35	96.70-47.04	—	—	—	40.4×45.7×43.2	59	VID&DC Iris, Day&Night
TS2V314CED (C70319)	3.5-8	1.4-300	CS	60.52-26.54	82.41-35.42	—	—	—	38.3×44.7×44.2	52	DC Iris
TS3V310 (C70316)	3-8	1.0-C	CS	68.98-26.44	93.22-35.26	—	—	—	36.2×44.4	47	Manual Iris, Day&Night
TS3V310ED (C70315)	3-8	1.0-360	CS	68.98-26.44	93.22-35.26	—	—	—	38.3×44.7×44.4	60	VID&DC Iris, Day&Night
TS4V214ED (C70223)	2.8-12	1.4-360	CS	71.82-18.05	93.29-23.50	—	—	—	43.0×51.5×63.5	83	DC Iris
TS10V518E (C70508)	5-50	1.8-360	CS	37.80-4.14	50.00-5.52	—	—	—	44.5×50.8×61.5	140	DC Iris

### 1/2 format

HS2V616E (C60635)	6-12	1.6-300	CS	34.98-17.23	47.38-23.02	65.29-30.82	—	30.5 P=0.5	40.4×45.7×43.5	57	VID&DC Iris, Day&Night
-------------------	------	---------	----	-------------	-------------	-------------	---	------------	----------------	----	------------------------

## Manual Zoom Lens

### 1/3 format

TS6ZE (C70605)	6.3-38	1.2-512	CS	31.26-5.59	41.12-7.43	—	—	49 P=0.75	57.5×77.8	320	Video&DC Iris
----------------	--------	---------	----	------------	------------	---	---	-----------	-----------	-----	---------------

### 1/2 format

H6Z810 (C60812)	8-48	1.0-22	C	24.92-4.42	32.99-5.86	43.26-7.73	—	55 P=0.75	57×95	430	Manual Iris
H6ZBE (C60811)	8-48	1.0-720	C	24.92-4.42	32.98-5.86	43.24-7.73	—	55 P=0.75	69×64×95	465	Video&DC Iris

### 2/3 format

C6Z1218 (C31204)	12.5-75	1.8-22	C	16.07-2.75	21.38-3.66	28.41-4.87	38.76-6.67	49 P=0.75	51×90	320	Manual Iris
C6ZE (C31219)	12.5-75	1.8-720	C	16.05-2.75	21.36-3.66	28.38-4.87	38.72-6.67	49 P=0.75	68×90	385	Video&DC Iris

## Motorized Zoom Lens

### 1/3 format

TS6ZME (C70600)	6.3-38	1.2-360	CS	31.26-5.59	41.12-7.43	—	—	49 P=0.75	58×63.5×78	410	Video&DC Iris
TS10ZME (C70500)	5.8-58	1.2-360	CS	33.77-3.62	44.07-4.78	—	—	49 P=0.75	64.6×70.3×85	380	Video&DC Iris
TS10ZME-P (C70501)	5.8-58	1.2-360	CS	33.77-3.62	44.07-4.78	—	—	49 P=0.75	64.6×70.3×85	430	Video&DC Iris
TS15ZAME (C70624)	6-90	1.2-430	CS	32.96-2.33	43.48-3.08	—	—	62 P=0.75	78×88.5×119	760	Video&DC Iris
TS15ZAME-P (C70627) *	6-90	1.2-430	CS	32.96-2.33	43.48-3.08	—	—	62 P=0.75	78×88.5×119	770	Video&DC Iris
TS20ZAME (C70904)	9-180	1.2-510	CS	22.61-1.15	30.28-1.53	—	—	95 P=1.0	116×135×223.5	2540	Video&DC Iris
TS20ZAME-P (C70906) *	9-180	1.2-510	CS	22.61-1.15	30.28-1.53	—	—	95 P=1.0	116×135×223.5	2540	Video&DC Iris

### 1/2 format

HS6ZME (C60806)	8-48	1.4-360	CS	24.81-4.39	32.78-5.82	42.88-7.69	—	49 P=0.75	58×63.5×78	400	Video&DC Iris
H6ZBME (C60809)	8-48	1.0-720	C	24.92-4.42	32.98-5.86	43.24-7.73	—	55 P=0.75	64×74.5×97	530	Video&DC Iris
H6ZBME-P (C60810) *	8-48	1.0-720	C	24.92-4.42	32.98-5.86	43.24-7.73	—	55 P=0.75	64×74.5×97	540	Video&DC Iris
HS10ZME (C60700)	7.5-75	1.4-360	CS	26.15-2.83	34.52-3.75	45.05-4.95	—	58 P=0.75	67×75×112	580	Video&DC Iris
H10ZME (C60701)	7.5-75	1.2-512	C	26.45-2.84	34.94-3.77	45.63-4.99	—	62 P=0.75	70×80.5×121.5	715	Video&DC Iris
H10ZME-P (C60702) *	7.5-75	1.2-512	C	26.45-2.84	34.94-3.77	45.63-4.99	—	62 P=0.75	70×80.5×121.5	740	Video&DC Iris
H15ZAME (C60826)	8-120	1.6-1000	C	24.76-1.76	32.85-2.34	43.37-3.09	—	62 P=0.75	78×88.5×134	800	Video&DC Iris
H15ZAME-P (C60829) *	8-120	1.6-1000	C	24.76-1.76	32.85-2.34	43.37-3.09	—	62 P=0.75	78×88.5×134	810	Video&DC Iris
H20ZAME (C61237)	12-240	1.6-720	C	17.17-0.88	22.95-1.17	30.78-1.56	—	95 P=1.0	116×135×223.5	2630	Video&DC Iris
H20ZAME-P (C61239) *	12-240	1.6-720	C	17.17-0.88	22.95-1.17	30.78-1.56	—	95 P=1.0	116×135×223.5	2630	Video&DC Iris
H55ZME-F (C61233)	12-1320	4.0-360	C	17.17-0.16	23.18-0.21	31.65-0.28	—	105 P=1.0	139.8×151.9×210	5400	Video Iris

### 2/3 format

C6Z1218M3 (C31211)	12.5-75	1.8-C	C	16.07-2.75	21.38-3.66	28.41-4.87	38.76-6.67	49 P=0.75	101.5×92.2×94.5	820	Motorized Iris
C6ZAME (C31220)	12.5-75	1.8-720	C	16.07-2.75	21.36-3.66	28.38-4.87	38.72-6.67	49 P=0.75	101.5×92.2×94.5	620	Video&DC Iris
C6ZME-P (C31221)	12.5-75	1.8-720	C	16.07-2.75	21.36-3.66	28.38-4.87	38.72-6.67	49 P=0.75	101.5×92.2×94.5	655	Video&DC Iris

## Day&Night Zoom Lens

### 1/2 format

H18ZME-F (C60839)	8-144	1.6-720	C	25.67-1.43	34.10-1.91	45.10-2.55	—	—	139.8×151.9×210	3840	Video Iris, Day&Night
-------------------	-------	---------	---	------------	------------	------------	---	---	-----------------	------	-----------------------

## Pinhole lens

### 1/3 format

TS420P (C70404)	4	2.0-C	CS	51.24	68.47	—	—	—	36.5×65.9	74	Manual Iris
TS420PE (C70403)	4	2.0-64	CS	51.24	68.47	—	—	—	36.5×42.3×65.9	79	DC Iris

### 1/2 format

H620P (C60612)	6.2	2.0-C	C	32.44	42.82	56.12	—	—	29×83.1	63	Manual Iris
H620PE (C60626)	6.2	2.0-300	C	32.44	42.82	56.12	—	—	39×45.5×83.2	100	Video&DC Iris

## Mega-Pixel Auto Iris Lens

H612E-M (C60632)	6	1.2-200	C	32.26	44.22	58.69	65.40 (1/1.8)	40.5 P=0.5	47×52.5×53.1	170	Video&DC Iris
H912E-M (C60900)	9	1.2-200	C	22.28	29.64	39.37	43.90 (1/1.8)	40.5 P=0.5	47×52.5×51.6	160	Video&DC Iris

## Board Camera Lens

### 1/4 format

QD3ZMED (C40219)	2.8-7.3	1.9-200	Special	73.42-28.74	—	—	—	—	35.1×29.7×26.8	18	DC Iris
QD2V2214AE (C40209)	2.2-4.5	1.4-200	Φ14	93.36-45.75	—	—	—	—	29.6×37.3×32	27	DC Iris
QD2V2814AE (C40208)	2.8-5.8	1.4-200	Φ14	74.62-35.87	—	—	—	—	29.6×37.3×32.1	26	DC Iris
QD2V2214BE-DN (C40216)	2.2-4.5	1.4-200	Φ14	92.84-45.88	—	—	—	—	29.6×50.2×31.9	34	DC Iris, Day&Night
QD2V2814BE-DN (C40217)	2.8-5.8	1.4-200	Φ14	74.67-35.86	—	—	—	—	29.6×50.2×31.9	33	DC Iris, Day&Night
QD222E (C40214)	2.3	2.2-128	Φ14	88.20	—	—	—	—	19×31×20.9	8	DC Iris
QD320E (C40302)	3	2.0-200	Φ14	69.14	—	—	—	—	19×31×18.2	8	DC Iris
QD420E (C40402)	4	2.0-200	Φ14	51.86	—	—	—	—	19×31×17.5	8	DC Iris
QD620E (C40602)	6	2.0-200	Φ14	33.82	—	—	—	—	19×31×19.8	8	DC Iris

### 1/3 format

TD3V314E-DN (C70318)	3-8	1.4-300	Φ14	68.67-26.48	92.55-35.28	—	—	—	29.6×41.2×33.1	29	DC Iris, Day&Night
----------------------	-----	---------	-----	-------------	-------------	---	---	---	----------------	----	--------------------

\*Manual override option is available on the models asterisked

Item	Model Number	Remarks
<b>●Accessory</b>		
2× Extender	2-EX (C80001)	Rear conversion lens to double the focal length.
	S2-EX (C80034)	(2-EX: For C-Mount lenses, S2-EX: For CS-Mount lenses)
Extension Tube set (Macro Ring)	EX-C6 (C90100)	6 different length of rings to adjust the focal point for the close-up application.
Mount Adapter	C-CS-A (C80035)	Adapter for C-Mount lens to be used with CS-Mount camera.
	KC-MOUNT (C80020)	Adapter for PENTAX K-Mount lens to be used with C-Mount camera.
Macro Focus Mount	MUM-2/MUM-2M	These Macro Focus Mounts extend the flange back length by 2mm by replacing the original C-Mount of lens. (MUM- 2: for H1212B, C1614A and B2514D) (MUM- 2M: for H1214-M, C1614-M, C2514-M, C3516-M and C5028-M)
	RR-27	These Reverse Rings are accessories to mount lens in reverse order magnifying objects. (RR- 27: for 27mm filter size, RR-40.5: for 40.5mm filter size)
Reverse Ring	RR-40.5	
	Dummy Lens	DM-163 (C80029/C80039)
DM-E01 (C80040)		(DM-163: Manual iris type, DM-E01: Auto iris type)
Close-up Lens/Filter		Various kinds of close-up lens and filter are available.



**PENTAX®**

**PENTAX Corporation (Tokyo, Sales Head Office)**

Tel: +81-3-3580-2092, Fax: +81-3-3580-2093, e-mail: security.intl@aoc.pentax.co.jp

**PENTAX Europe GmbH. (Germany, European Central Office)**

Tel: +49-40-561-92-109, Fax: +49-40-561-92-334, e-mail: cctv@pentax.de

**PENTAX U.K. Ltd. (U.K.)**

Tel: +44-1753-792-722, Fax: +44-1753-792-727, e-mail: sales@cctv.pentax.co.uk

**PENTAX France S.A.S. (France)**

Tel: +33-1-3025-9471, Fax: +33-1-3025-7576, e-mail: goujon.remi@pentax.fr

**PENTAX Scandinavia AB (Sweden)**

Tel: +46-18-711-300, Fax: +46-18-13-29-38, e-mail: info@pentax.se

**PENTAX Benelux B.V. (Netherlands)**

Tel: +31-76-531-3031, Fax: +31-76-531-3000, e-mail: precision@pentax.nl

**PENTAX Benelux B.V. (Belgium)**

Tel: +32-2-7250872, Fax: +32-2-7250264, e-mail: precision@pentax.be

**PENTAX of America, Inc. (U.S.A.)**

Tel: +1-303-728-0225, Fax: +1-303-728-0226, e-mail: vhemingson@pentax.com

**PENTAX Canada Inc. (Canada)**

Tel: +1-905-286-5585, Fax: +1-905-286-5586, e-mail: sdavies@pentaxcanada.ca

\* Specifications are subject to change without notice due to product improvement.

\* Printed on recycled paper.