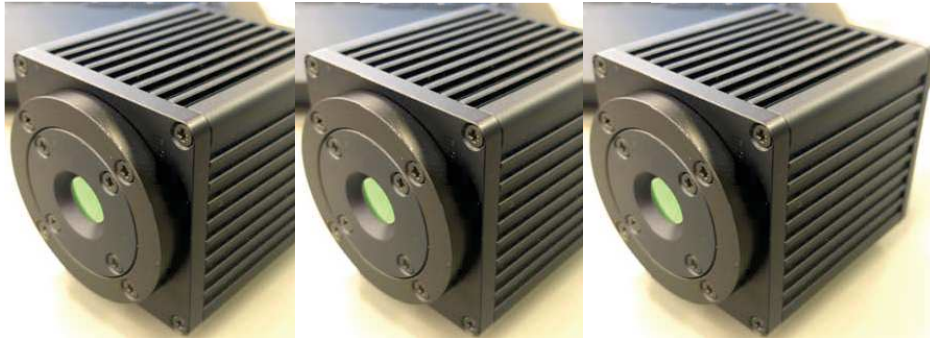


## Compact Shutterless Thermal Camera Core Series (Simultaneous output both thermal image and temperature )



	LW10F90-E	LW10F42-ET	LW10F12-ET
<b>Detector</b>	Uncooled microbolometer ( 8 ~ 14 $\mu$ )		
<b>Resolution</b>	80 (H) x 80 (V)		
<b>Output data</b>	Thermal image	Thermal image + Temp data ( $\pm 5^{\circ}\text{C}$ )	
<b>H.FOV</b>	90 $^{\circ}$	42 $^{\circ}$	12 $^{\circ}$
<b>Frame rate</b>	1/2/4/8Hz		
<b>Image output</b>	Ethernet (UDP)		

### Main Features

#### ■ Three Focal Length Lenses products Line-up :

- Support from Wide to Mid focal length
- f=1.9mm (90 $^{\circ}$ ) , f=3.7mm (42 $^{\circ}$ ) , f=13mm (12 $^{\circ}$ )

#### ■ Possible to measure temperature :

- Thanks to high performance lens and original temperature calculation program, able to measure temperature on the position which likes to see

#### ■ Shutterless function :

- Smooth image output without interrupting images and shutter noise
- No failure related to shutter issue without mechanical shutter

#### ■ Dust/Water proof :

- Support IP67 for various applications